

Product Features

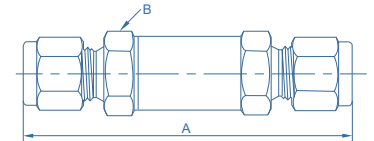
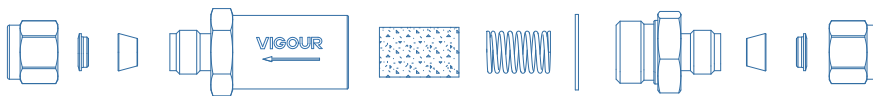
- The VF Series is an In-Line filtration device
- Filter material: 316L
- Pressure: Max. 206bar
- Filter Rating: 5µm standard, more option see below table.

Flow Rate

| Element Nominal Pore Size µm | Inlet Pressure ① psig (bar) | | |
|---------------------------------|--|------------|------------|
| | 5 (0.34) | 10 (0.68) | 15 (1.0) |
| | Air Flowstd, std ft ³ /min (std L/min) for 1/8" end connections | | |
| 0.2 | 0.01 (0.3) | 0.02 (0.6) | 0.05 (1.4) |
| 2 | 0.20 (5.6) | 0.40 (11) | 0.60 (17) |
| 5 | 0.40 (11) | 0.60 (17) | 0.9 (25) |
| 10 | 0.50 (14) | 0.9 (25) | 1 (28) |
| 20 | 1 (28) | 1.7 (47) | 2 (56) |



In-line Type



Dimensions (mm)

| End Connections | | Ordering Number | Dimensions in. (mm) | | |
|-----------------|---------|-----------------|---------------------|--------------|-------------|
| Inlet / Outlet | Size | | Aperture Size | A | B |
| Tube Fitting | 1/8 in. | VF-S-02-02 | 0.094 (2.39) | 2.33 (59.2) | 3/4 (19.0) |
| | 1/4 in. | VF-S-04-04 | 0.187 (4.75) | 2.42 (61.56) | 3/4 (19.0) |
| | 3/8 in. | VF-S-06-06 | 0.281 (7.14) | 3.18 (80.8) | 3/4 (19.0) |
| | 1/2 in. | VF-S-08-08 | 0.406 (10.3) | 3.37 (85.6) | 4/5 (22) |
| | 3mm | VF-S-3M-3M | 0.094 (2.39) | 2.87 (72.9) | 3/4 (19.0) |
| Female NPT | 6mm | VF-S-6M-6M | 0.187 (4.75) | 3.01 (76.7) | 3/4 (19.0) |
| | 1/8 in. | VF-S-F2-F2 | 0.094 (2.39) | 2.16 (54.9) | 9/16 (14.3) |
| Male NPT | 1/4 in. | VF-S-F4-F4 | 0.187 (4.75) | 2.63 (67) | 3/4 (19.0) |
| | 1/4 in. | VF-S-M4-M4 | 0.187 (4.75) | 2.63 (67) | 3/4 (19.0) |
| Face Seal male | 1/4 in. | VF-S-MV4-MV4 | 0.187 (4.75) | 2.87 (73) | 3/4 (19.0) |
| | 1/2 in. | VF-S-MV8-MV8 | 0.406 (10.3) | 3.49 (88.6) | 1 (25.4) |

Ordering Information

VF - S - 04 - 04 - 2

Material

S: 316L

C: Chrome Plated Brass

Nominal Pore Size

0.2: 0.2 µm

2: 2 µm

5: 5 µm

10: 10 µm

20: 20 µm

Inlets / Outlets

02: 1/8" Tube fitting

3M: 3mm Tube fitting

F2: 1/8" Female NPT

M4: 1/4" Male NPT

04: 1/4" Tube fitting

6M: 6mm Tube fitting

F4: 1/4" Female NPT

M8: 1/2" Male NPT

06: 3/8" Tube fitting

8M: 8mm Tube fitting

F6: 3/8" Female NPT

MV4: 1/4" Face seal male

08: 1/2" Tube fitting

10M: 10mm Tube fitting

F8: 1/2" Female NPT

MV8: 1/2" Face seal male

12: 3/4" Tube fitting

12M: 12mm Tube fitting

F12: 3/4" Female NPT

16: 1" Tube fitting

20M: 20mm Tube fitting

F16: 1" Female NPT



Product Features

- Pressure: Max. 413bar
- Filter material: 316L
- Filter Rating: 5µm standard, more option see below table.

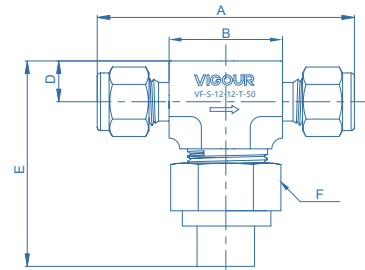
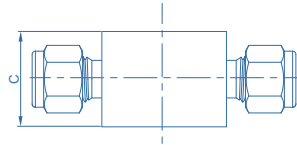
Flow Rate

| Element Nominal Pore Size µm | Inlet Pressure ① psig (bar) | | |
|---------------------------------------|---|-----------|-----------|
| | 5 (0.34) | 10 (0.68) | 15 (1.0) |
| | Air Flowstd, std ft3/min (std L/min) for 1/8" end connections | | |
| 2 | 0.20 (5.6) | 0.40 (11) | 0.60 (17) |
| 5 | 0.40 (11) | 0.60 (17) | 0.9 (25) |
| 50 | 1.4 (40) | 1.8 (51) | 2 (57) |
| 80 | 1.6 (45) | 2.0 (57) | 2.3 (65) |

① Outlet is discharged to atmosphere



Tee Type



Dimensions (mm)

| End Connections | | Ordering Number | Dimensions, in.(mm) | | | | | | |
|-----------------|----------------|-----------------|---------------------|-------------|-------------|-------------|-------------|-------------|------------|
| Inlet/Outlet | Size | | bore diameter | A | B | C | D | E | F |
| Tube fitting | 1/8 in. | VF-S-02-02-T | 0.094 (2.39) | 2.25 (57.4) | 1.06 (26.9) | 1.10 (28) | 0.38 (9.7) | 1.77 (45) | 1 (25.4) |
| | 1/4 in. | VF-S-04-04-T | 0.174 (4.41) | 2.45 (62.4) | 1.06 (26.9) | | | | |
| | 3/8 in. | VF-S-06-06-T | 0.213 (5.41) | 2.84 (72.1) | 1.32 (33.5) | 1.20 (30.6) | 0.46 (11.7) | 1.77 (45) | 1-1/8 (28) |
| | 1/2 in. | VF-S-08-08-T | 0.250 (6.35) | 3.04 (77.2) | 1.31 (33.3) | | | | |
| | 6mm | VF-S-6M-6M-T | 0.172 (4.36) | 2.46 (62.5) | 1.06 (26.9) | 1.10 (28) | 0.38 (9.7) | 1.87 (47.5) | 1 (25.4) |
| | 8mm | VF-S-8M-8M-T | 0.213 (5.41) | 2.84 (72.1) | 1.38 (35.1) | | | | |
| | 10mm | VF-S-10M-10M-T | 0.250 (6.35) | 2.86 (72.6) | 1.32 (33.5) | 1.13 (28.7) | 0.46 (11.7) | 2.20 (55.9) | 1-1/8 (28) |
| 12mm | VF-S-12M-12M-T | 3.04 (77.2) | | 1.31 (33.3) | | | | | |
| Male NPT | 1/8 in. | VF-S-F2-F2-T | 0.174 (4.41) | 2.00 (50.8) | 1.00 (25.4) | 1.00 (25.4) | 0.38 (9.7) | 1.87 (47.5) | 1 (25.4) |
| | 1/4 in. | VF-S-F4-F4-T | | 2.13 (54.1) | | | | | |
| Female NPT | 1/4 in. | VF-S-M4-M4-T | 0.174 (4.41) | 2.13 (54.1) | 1.00 (25.4) | 1.00 (25.4) | 0.38 (9.7) | 1.87 (47.5) | 1 (25.4) |
| | 3/8 in. | VF-S-M6-M6-T | | | | | | | |
| | 1/2 in. | VF-S-M8-M8-T | 0.250 (6.35) | 2.75 (69.9) | 1.25 (31.8) | 1.13 (28.7) | 0.46 (11.7) | 2.20 (55.9) | 1-1/8 (28) |

Ordering Information

VF - S - 04 - 04 - T - 2

Material

S: 316L

C: Chrome Plated Brass

Inlets / Outlets

Tube fitting: see above tables

NPT threads: see above tables

Nominal Pore Size

2: 2 µm

5: 5 µm

50: 50 µm

80: 80 µm

Type

T: Tee type

