

Product Features

- Brass chrome plated body for inert, reactive, flammable and oxidizing gas and mixtures up to grade 6.0
- Stainless steel 316L body for corrosive gases
- Suitable for inlet pressure up to 40 bar
- Wide range of inlets / outlets
- Metal-to-metal sealing to atmosphere
- Tested for use with oxygen

Typical Applications

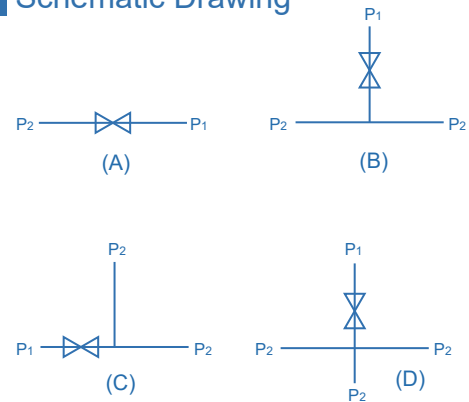
- Component Testing
- Calibration Systems
- Laboratory Pressure Control
- High Pressure Sampling Systems
- Service & Test Equipment



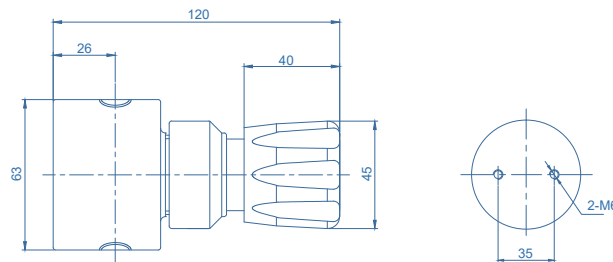
Technical Data

Type:	Diaphragm valve
Inlet pressure:	max. 40 bar
Materials	
Body:	see ordering info
seat:	PCTFE
Diaphragm:	Hastelloy® C276
Filter:	SS316L
Inlet / Outlet connection:	see ordering info
Temperature range:	-30°C to +74°C
Leak rate:	1x10 ⁻⁸ mbar l/s He
Orifice:	Φ8mm
Flow capacity:	Cv=0.6
Weight:	0.8kg

Schematic Drawing



Dimensions (mm)



Ordering Information

VDV8 - C - A - F6 - F6

Body Material	S: 316L C: Chrome Plated Brass
Type	A: 2 Ports B: 3 Ports C: 3 Ports D: 4 Ports

Inlets / Outlets	F6: 3/8"NPT(F) F8: 1/2"NPT(F)
------------------	----------------------------------

