

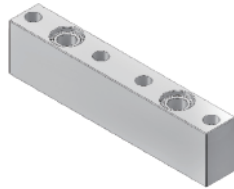
IGS系统 基座 —— VIB 系列 (W-seal)

产品特点

- W型密封
- 非固定安装，保证密封效果
- 浸润表面EP处理
- 表面光洁度: Max. 5 μ m. Ra
- 材质: 316L VIM-VAR



标准基块



1路旁通基块



堵头



过度基块



2路旁通基块



末端基块

订购参数

VIB11 - W - 02001

接口尺寸

11: 1.125"
15: 1.5"

接口类型

W: W-seal

零件编号

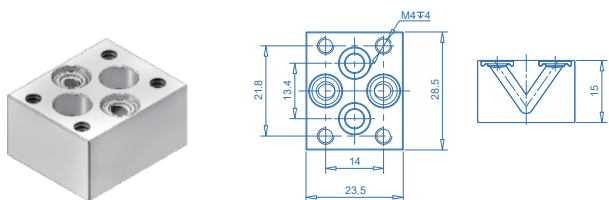
02001
02002
02003
01001
04001
.....

*其他型号请咨询厂家，请参考详细尺寸图。

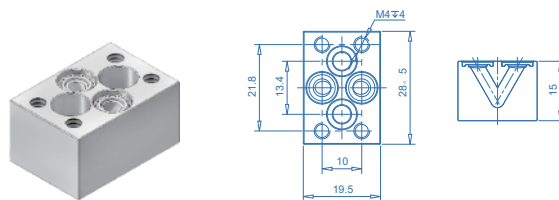


IGS系统 基座 ——
VIB 系列 (W-seal)

尺寸 (mm)



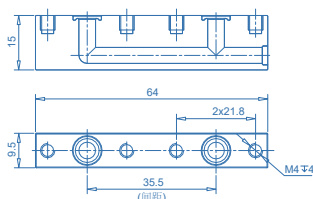
02002



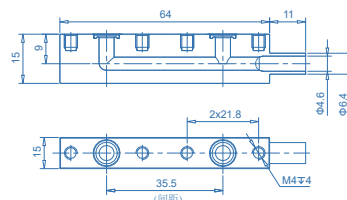
02001



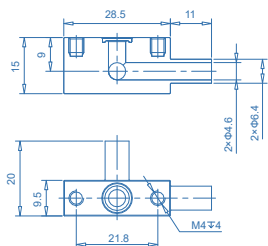
间距35.5mm: 02003
间距30mm: 02004



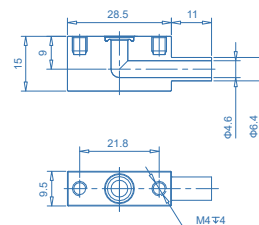
间距35.5mm: 02005
间距30mm: 02006



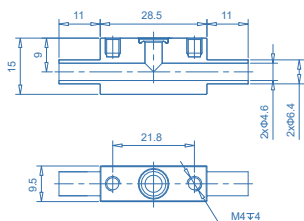
01001



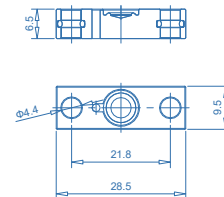
01003



01004

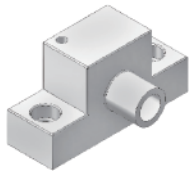


01005

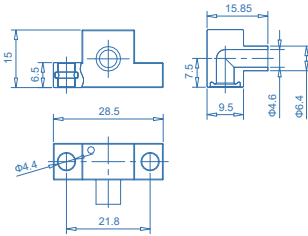


IGS系统 基座 ——
VIB 系列 (W-seal)

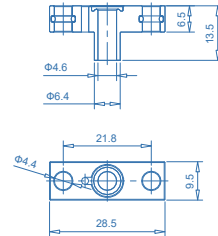
尺寸 (mm)



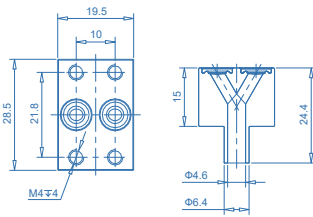
01006



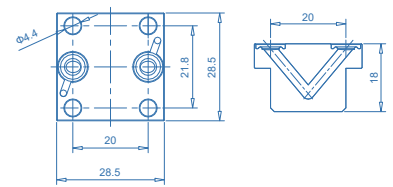
01007



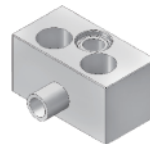
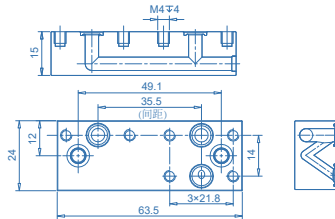
02010



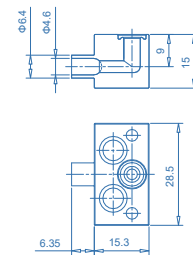
02011



间距35.5mm: 03001
间距30mm: 03002



01008



01009

