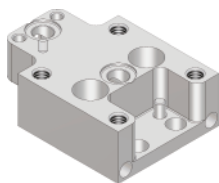


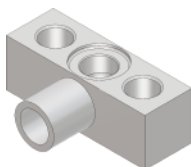
IGS系统 基座 —— VIB 系列 (C-seal)

产品特点

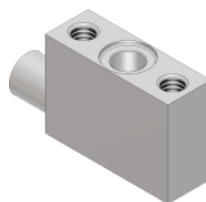
- C型密封
- 非固定安装, 保证密封效果
- 浸润表面EP处理
- 表面光洁度: Max. 5 μ m. Ra
- 材质: 316L VIM-VAR



基础基块



凸缘基块



复合基块



托架

订购参数

VIB11 - C - 32205

接口尺寸

11: 1.125"

15: 1.5"

接口类型

C: C-seal

零件编号

32205

32206

32208

32209

32210

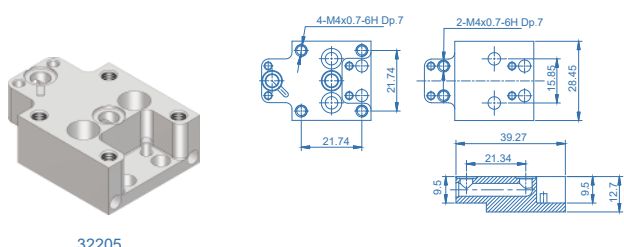
.....

*其他型号请咨询厂家, 请参考详细尺寸图。

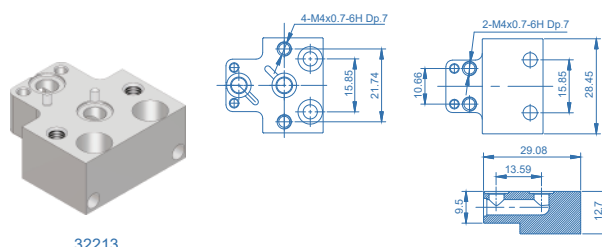


IGS系统 基座 ——
VIB 系列 (C-seal)

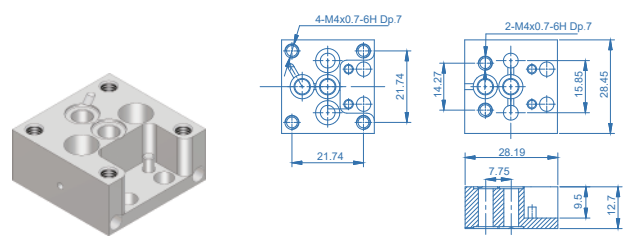
尺寸 (mm)



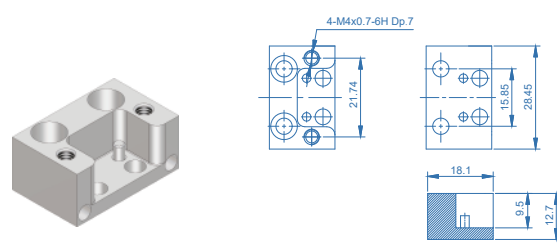
32205



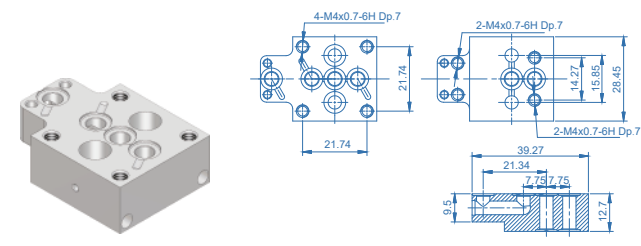
32213



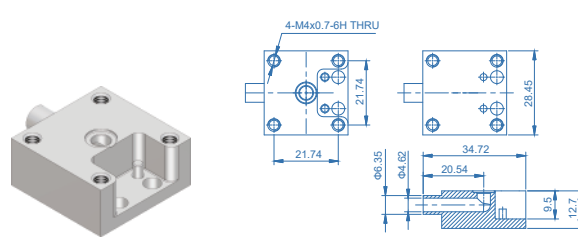
32206



32214



32208

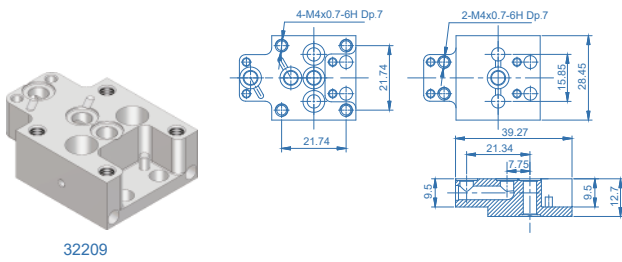


34476

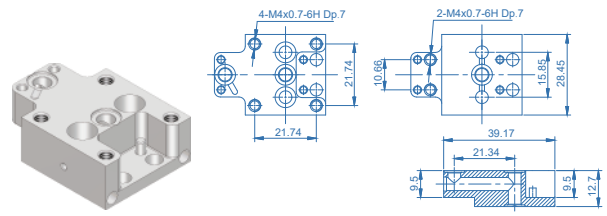


IGS系统 基座 ——
VIB 系列 (C-seal)

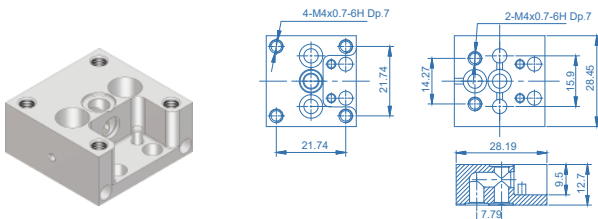
尺寸 (mm)



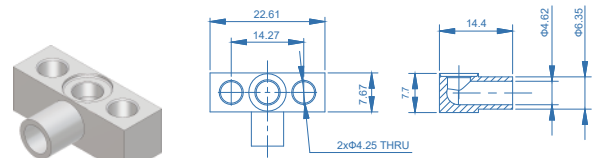
32209



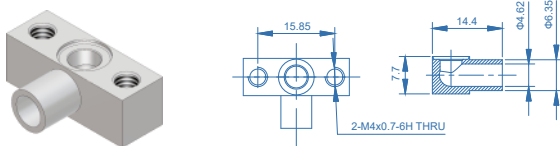
32212



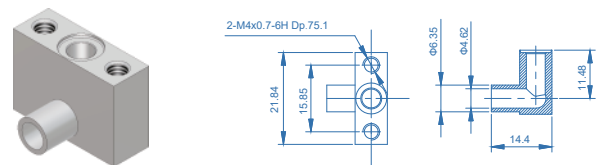
32210



32215



32218

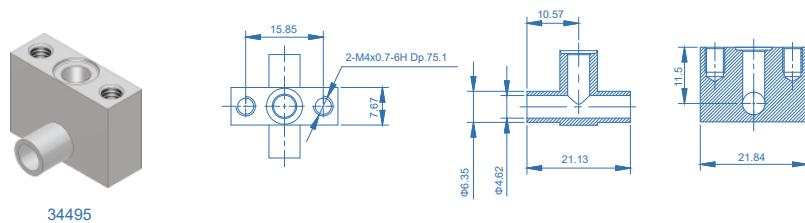
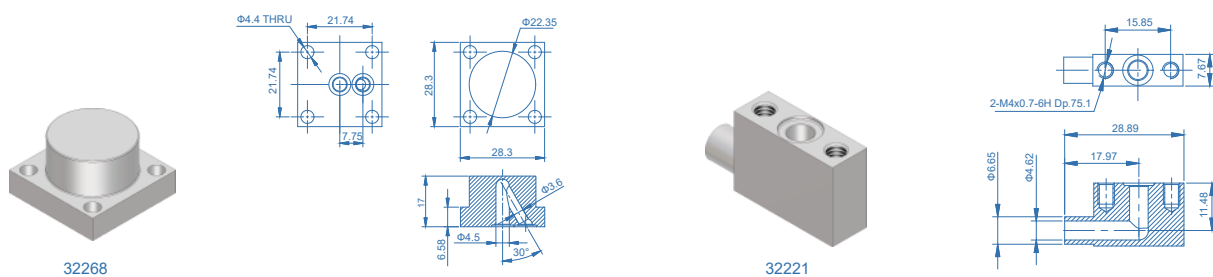
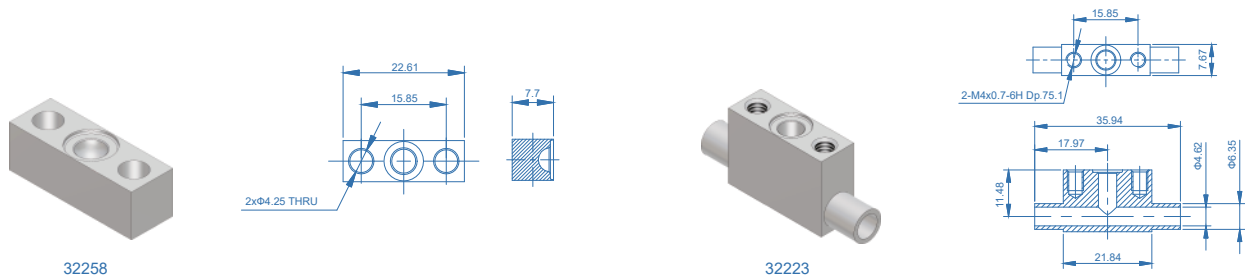
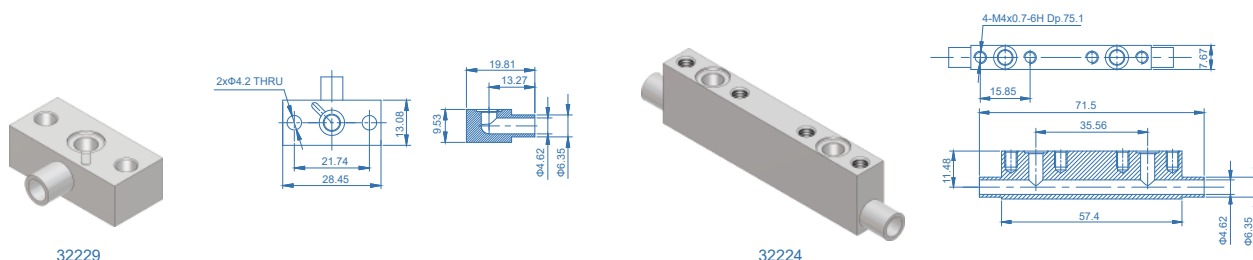


32255



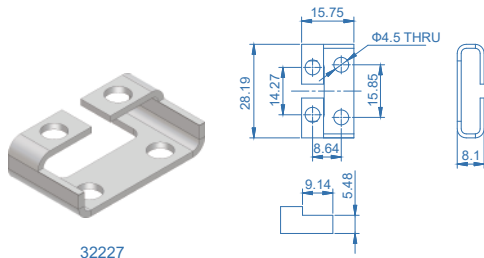
IGS系统 基座 —— VIB 系列 (C-seal)

尺寸 (mm)

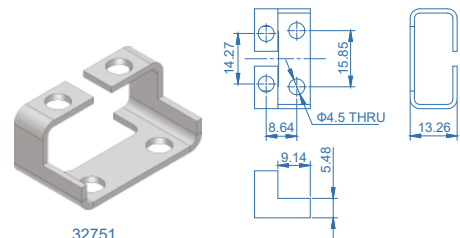


IGS系统 支架 ——
VIB 系列 (C-seal)

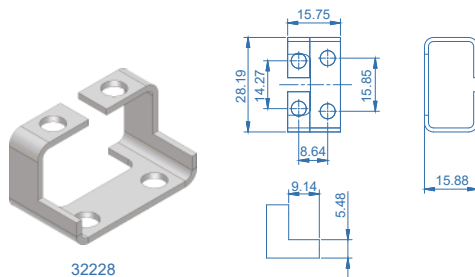
尺寸 (mm)



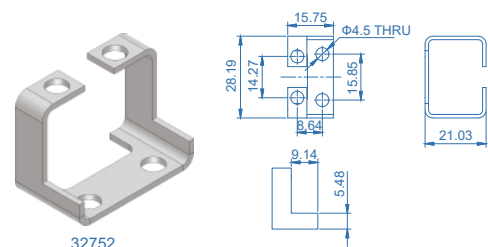
32227



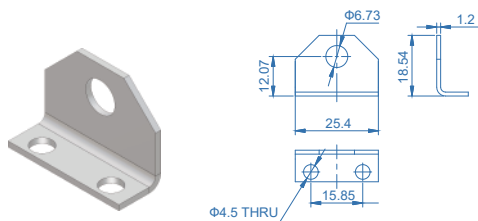
32751



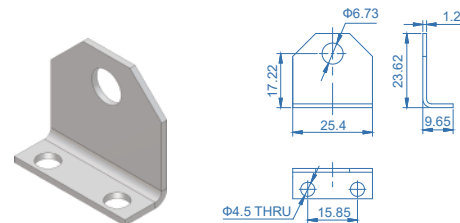
32228



32752



32245



32778

