

# Contact Gauges

## VG20SE Series

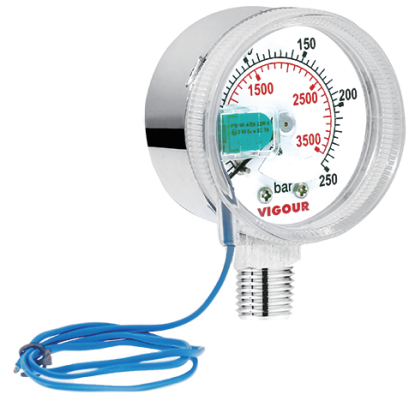
VIGOUR

### Product Features

- Contact gauge (KI) with inductance contact
- For monitoring gas supply pressure and shortage
- For inert, combustible, oxidizing, and corrosive gases and gas mixtures
- Line 0.5m
- With NAMUR sensor
- Set point adjustable over 0~24% of scale
- Tested for use with oxygen

### Typical Applications

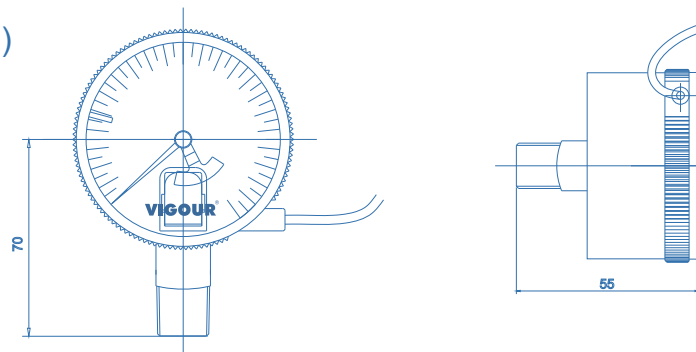
Gas panels may be optionally equipped with contact pressure gauges. Contact pressure gauges combine the advantages of in situ readings with the demands of electrical signal transmissions. In combination with signal boxes, this creates visual and acoustic warning signals in the case of pressure drop and the monitoring of line pressure according to adjustable thresholds.



### Technical Data

Dual scale:	bar / psi
Connection:	1/4"NPT(M)
Size:	2"
Accuracy:	±2.5%
Body Material:	316L
Switching function:	NC
Outlet type:	NAMUR
Temperature:	-25~100°C

### Dimensions (mm)



### Ordering Information

**VG 20 SE - 400 - M4**

#### Series

G: radial direction  
R: axial direction

#### Material

S: 316L  
C: Chrome Plated Brass

Inlet connection  
M4: 1/4"NPT(M)

#### Pressure Range

25B: 0~25bar / 0~350psig  
60B: 0~60bar / 0~860psig  
250B: 0~250bar / 0~3500psig  
400B: 0~400bar / 0~5800psig

