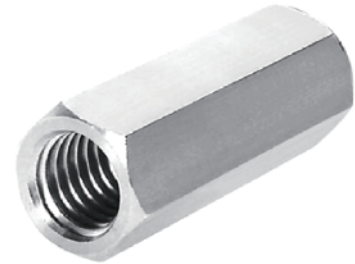


Product Features

- One directional flow indicated by arrow on body
- For high flow capability and low pressure drop
- Working temperature range: -20°C to +165°C
- Cleaned for use in oxygen service
- Max Inlet pressure: 200 bar

Typical Applications

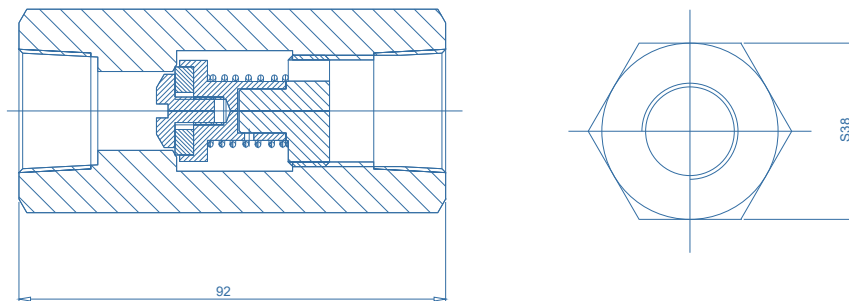
- Inline check valves for leak free operation in gas service



Technical Data

Body:	316L / Brass
Cracking pressure:	1 psig
Spring	316L
Piston:	316L
Seat:	Viton
Leak rate:	Bubble-tight

Dimensions (mm)



Ordering Information

VCV - S - F12

Material

S: 316L

B: Brass

Inlets / Outlets

F12: 3/4" NPT(F)

