

# Diaphragm Valves

## VDV8 Series

**VIGOUR**

### Product Features

- Diaphragm valve
- Brass chrome plated body for inert, reactive, flammable and oxidizing gas and mixtures up to grade 6.0
- Stainless steel 316L body for corrosive gases
- Suitable for inlet pressure up to 40 bar
- Wide range of inlets / outlets
- Metal-to-metal sealing to atmosphere
- Tested for use with oxygen

### Typical Applications

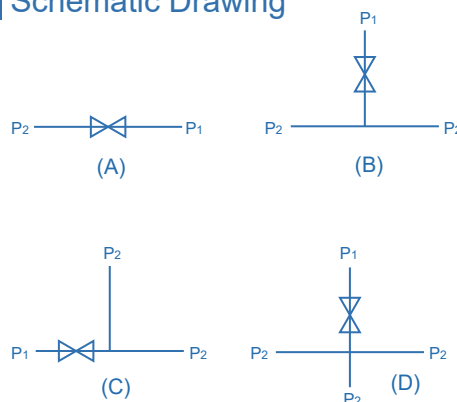
- Component Testing
- Calibration Systems
- Laboratory Pressure Control
- High Pressure Sampling Systems
- Service & Test Equipment



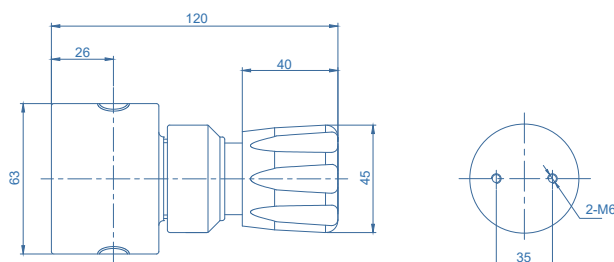
### Technical Data

Type:	Diaphragm valve
Inlet pressure:	max. 40 bar
<b>Materials</b>	
Body:	see ordering info
seat:	PCTFE
Diaphragm:	Hastelloy® C276
Filter:	SS316L
Inlet / Outlet connection:	see ordering info
Temperature range:	-30°C to +74°C
Leak rate:	1x10 <sup>-8</sup> mbar l/s He
Orifice:	Φ8mm
Weight:	0.8kg

### Schematic Drawing



### Dimensions (mm)



### Ordering Information

**VDV8 - C - A - F6 - F6**

Body Material

S: 316L

C: Chrome Plated Brass

Type

A: 2 Ports

B: 3 Ports

C: 3 Ports

D: 4 Ports

Inlets / Outlets

F6: 3/8"NPT(F)

F8: 1/2"NPT(F)

